

General Postproc

- Data & File Opts
- Results Summary
- Read Results
 - First Set
 - Next Set
 - Previous Set
 - Last Set
 - By Pick
 - By Load Step
 - By Time/Freq
 - By Set Number
 - FLOTRAN 2.1A
- Failure Criteria
- Plot Results
- List Results
- Query Results
- Options for Outp
- Results Viewer
- Write PGR File
- Nodal Calcs
- Element Table
- Path Operations
- Surface Operations
- Load Case
- Check Elem Shape
- Write Results
- ROM Operations
- Submodeling
- Fatigue
- Safety Factor
- Define/Modify
- Nonlinear Diagnostics
- Reset
- Manual Rezoning

ity Menu (file0)
_ _ _

ne Parameters Macro MenuCtrls Help

▼

⌕

ELEMENTS

U

PRES-NORM

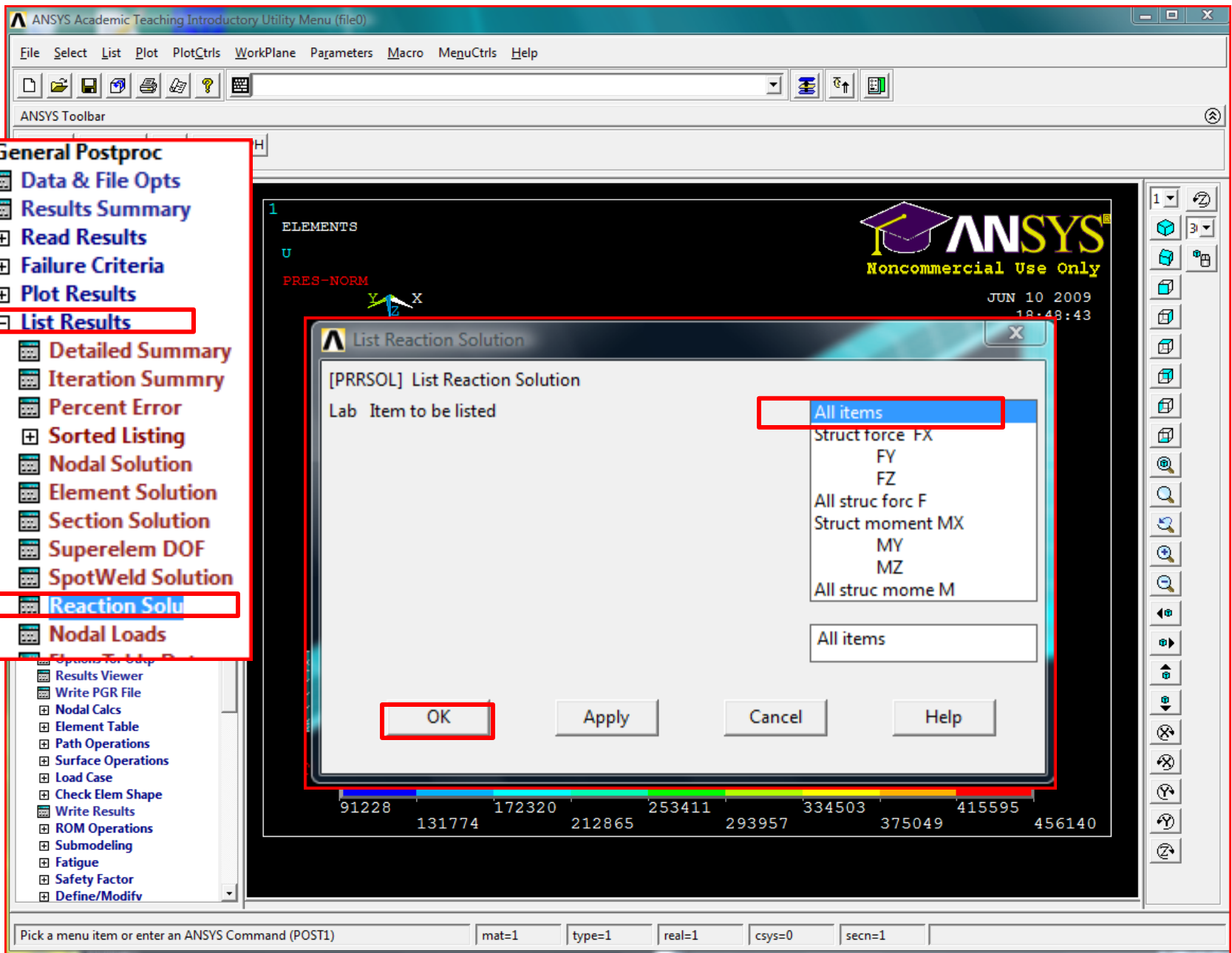
Noncommercial Use Only

JUN 10 2009
18:48:43

1
3

91228	131774	172320	212865	253411	293957	334503	375049	415595	456140
-------	--------	--------	--------	--------	--------	--------	--------	--------	--------

POST1
mat=1
type=1
real=1
csys=0
secn=1



ANSYS Academic Teaching Introductory Utility Menu (file0)

File Select List Plot PlotCtrls WorkPlane Parameters Macro MenuCtrls Help

ANSYS Toolbar

SAVE_DB RESUM_DB QUIT POWRGRPH

ANSYS Main Menu

- Preferences
- Preprocessor
- Solution
- General Postproc
 - Data & File Opts
 - Results Summary
 - Read Results
 - Failure Criteria
 - Plot Results
 - List Results
 - Detailed Summary
 - Iteration Summary
 - Percent Error
 - Sorted Listing
 - Nodal Solution
 - Element Solution
 - Section Solution
 - Superelem DOF
 - SpotWeld Solution
 - Reaction Solu
 - Nodal Loads
 - Elem Table Data
 - Vector Data
 - Path Items
 - Linearized Strs
 - Query Results
 - Options for Outp
 - Results Viewer
 - Write PGR File
 - Nodal Calcs
 - Element Table
 - Path Operations
 - Surface Operations
 - Load Case
 - Check Elem Shape
 - Write Results
 - ROM Operations
 - Submodeling
 - Fatigue
 - Safety Factor
 - Define/Modif

PRRSOL Command

File

```

PRINT REACTION SOLUTIONS PER NODE
**** POST1 TOTAL REACTION SOLUTION LISTING ****
LOAD STEP= 1 SUBSTEP= 1
TIME= 1.0000 LOAD CASE= 0
THE FOLLOWING X,Y,Z SOLUTIONS ARE IN THE GLOBAL COORDINATE SYSTEM

```

NODE	FX	FY	FZ
1	61.941	-157.80	178.07
2	108.70	-0.51245	44.205
3	112.27	-211.00	107.00
4	188.65	-111.73	157.55
5	108.70	0.51245	-44.205
6	174.75	-44.050	1.9388
7	174.75	44.050	-1.9388
8	61.941	157.80	-178.07
9	188.65	111.73	-157.55
10	112.27	211.00	-107.00
17	-105.82	71.929	-38.313
18	-65.808	293.66	-208.09
19	-164.66	164.98	-68.159
20	-105.82	-71.929	38.313
21	-259.79	79.510	-100.94
22	-259.79	-79.510	100.94
23	-164.66	-164.98	68.159
24	-65.808	-293.66	208.09

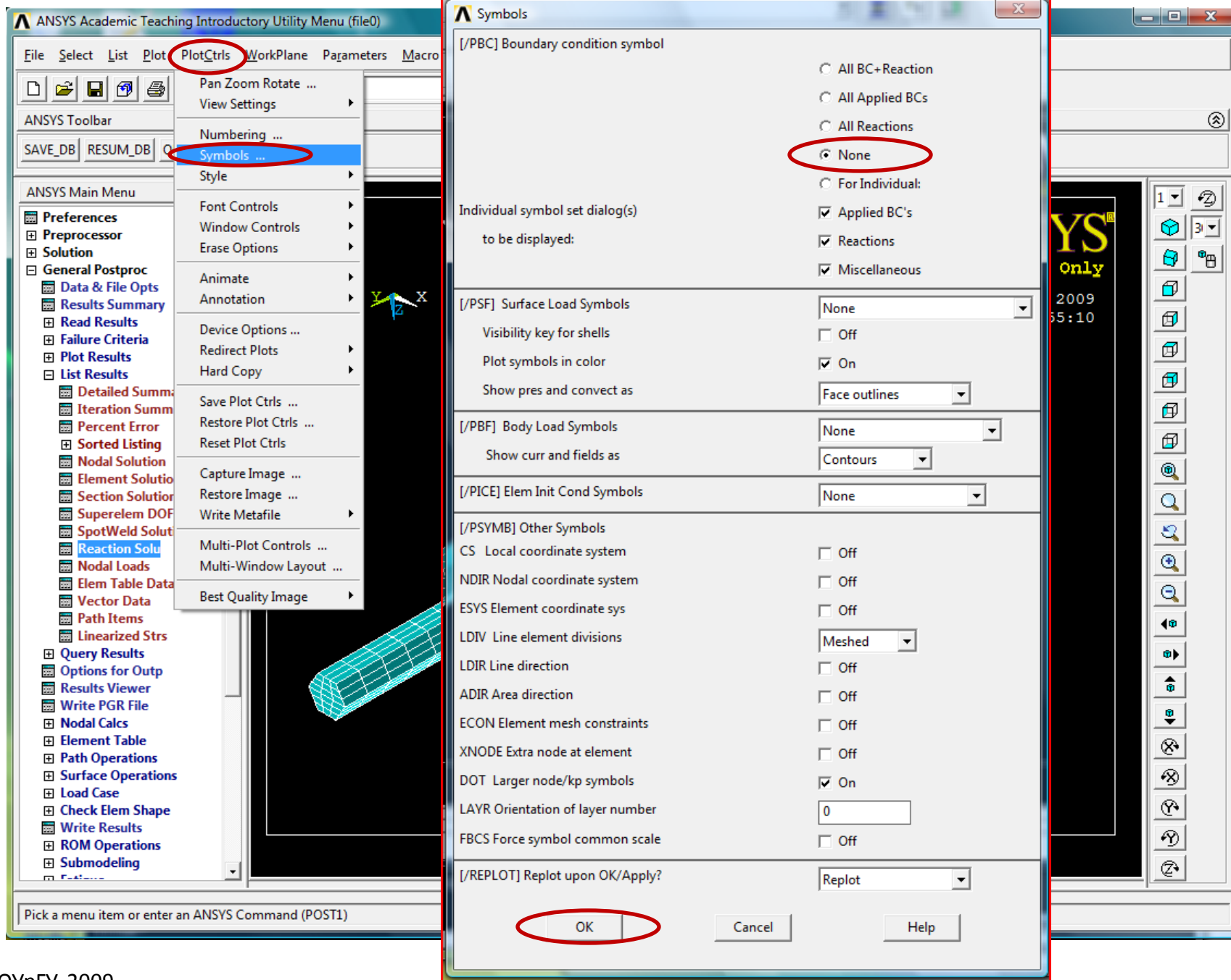
```

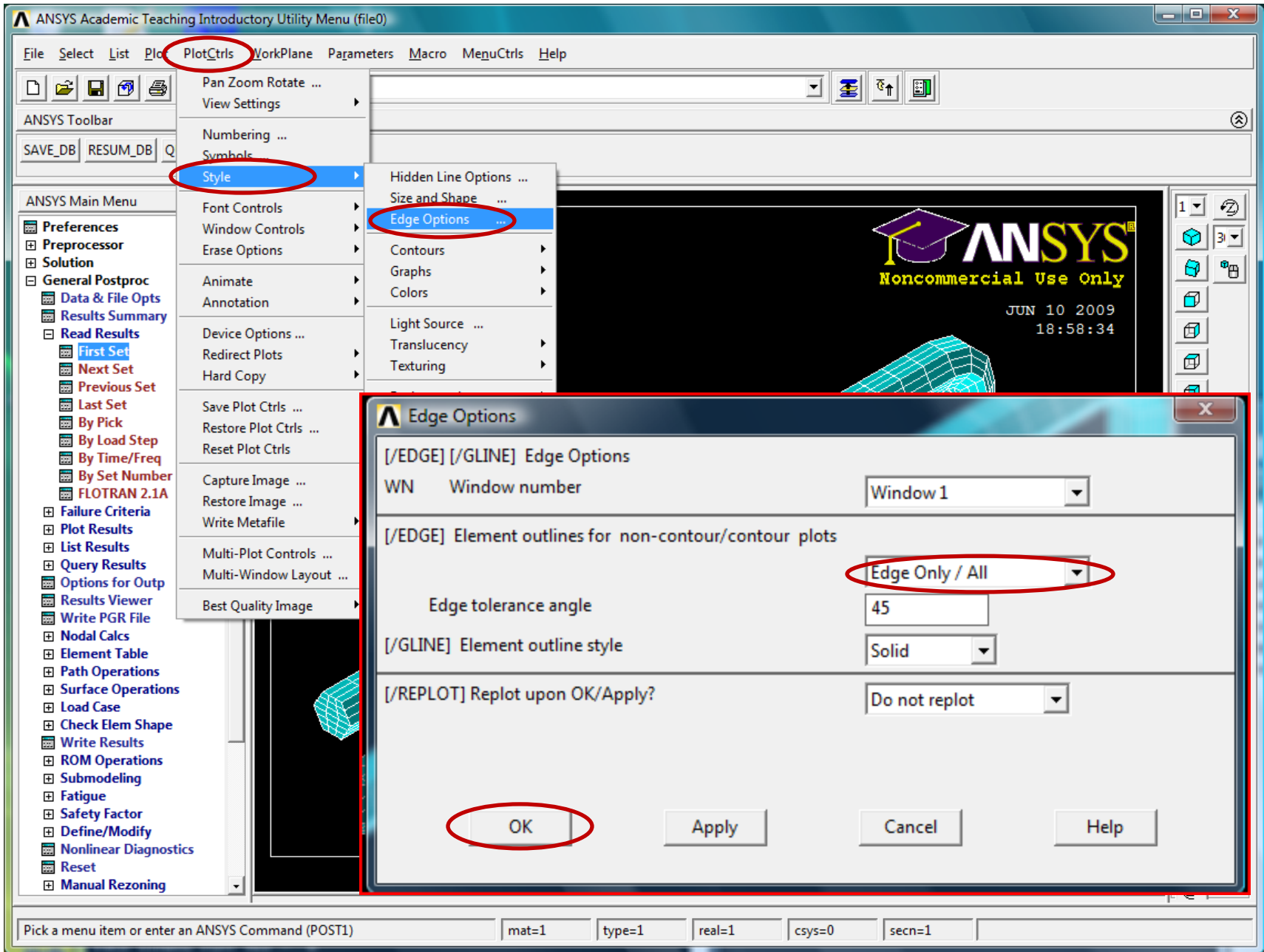
TOTAL VALUES
VALUE 100.46 -0.44264E-09 0.55185E-08

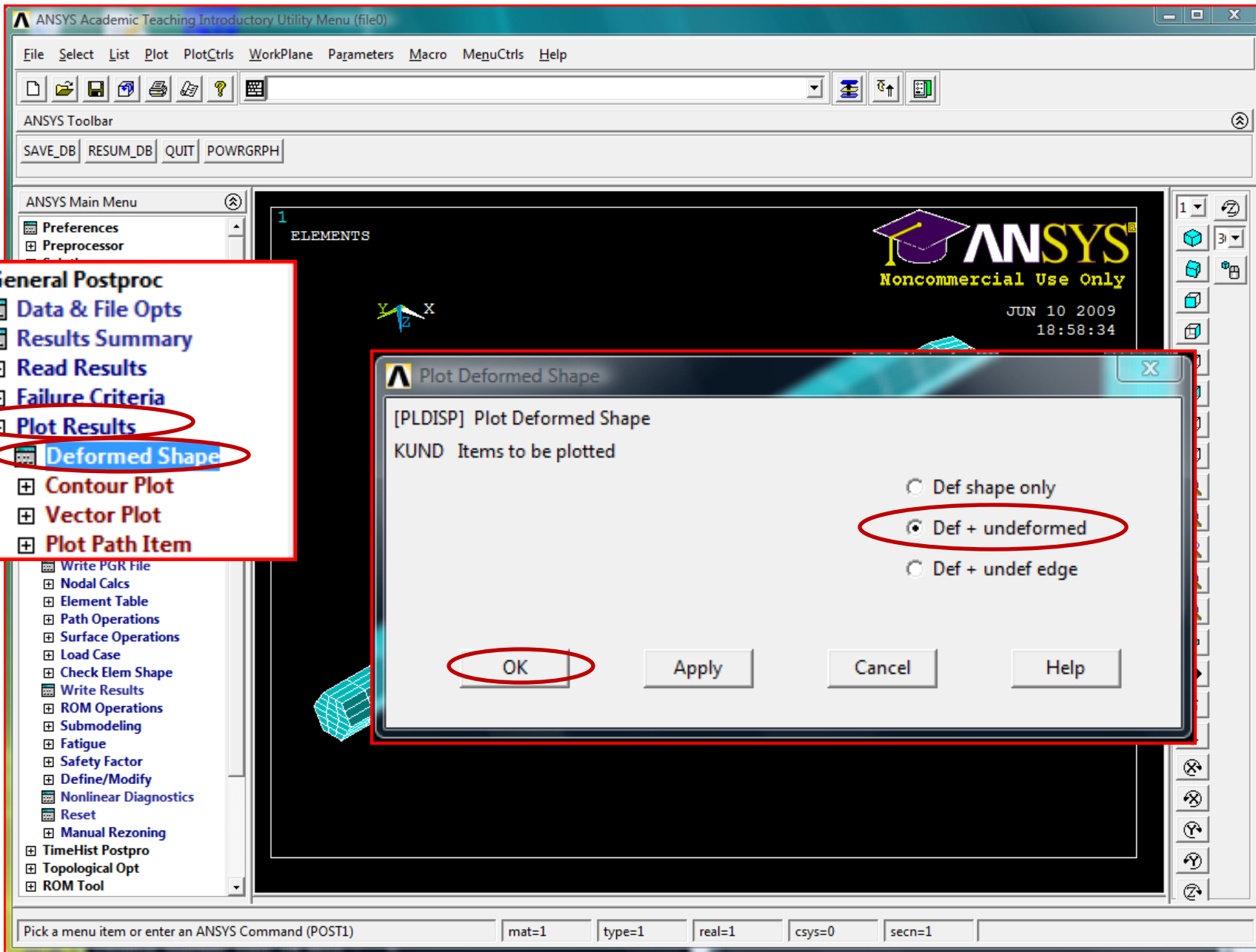
```

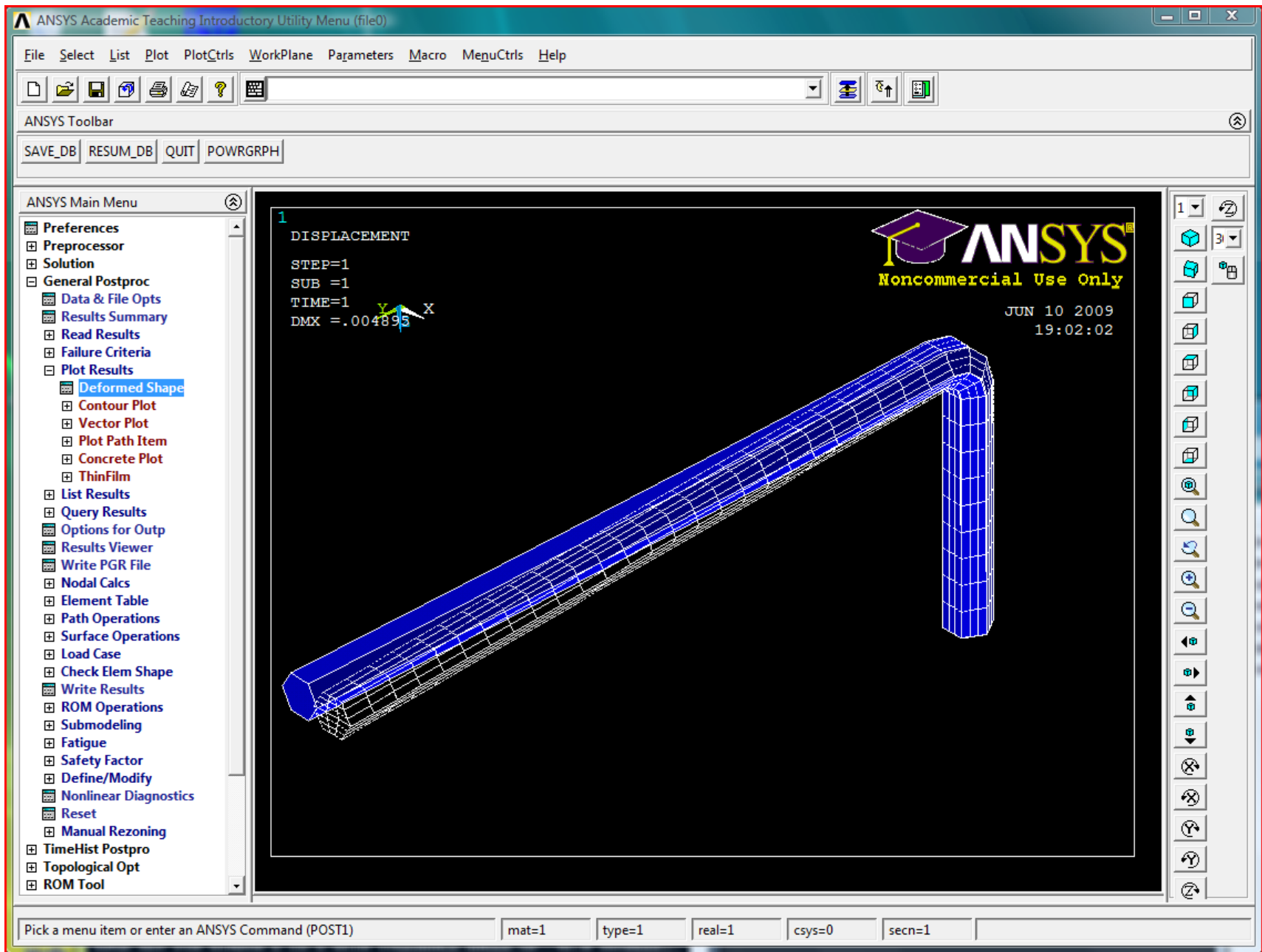
91228 131774 172320 212865 253411 293957 334503 375049 415595 456140

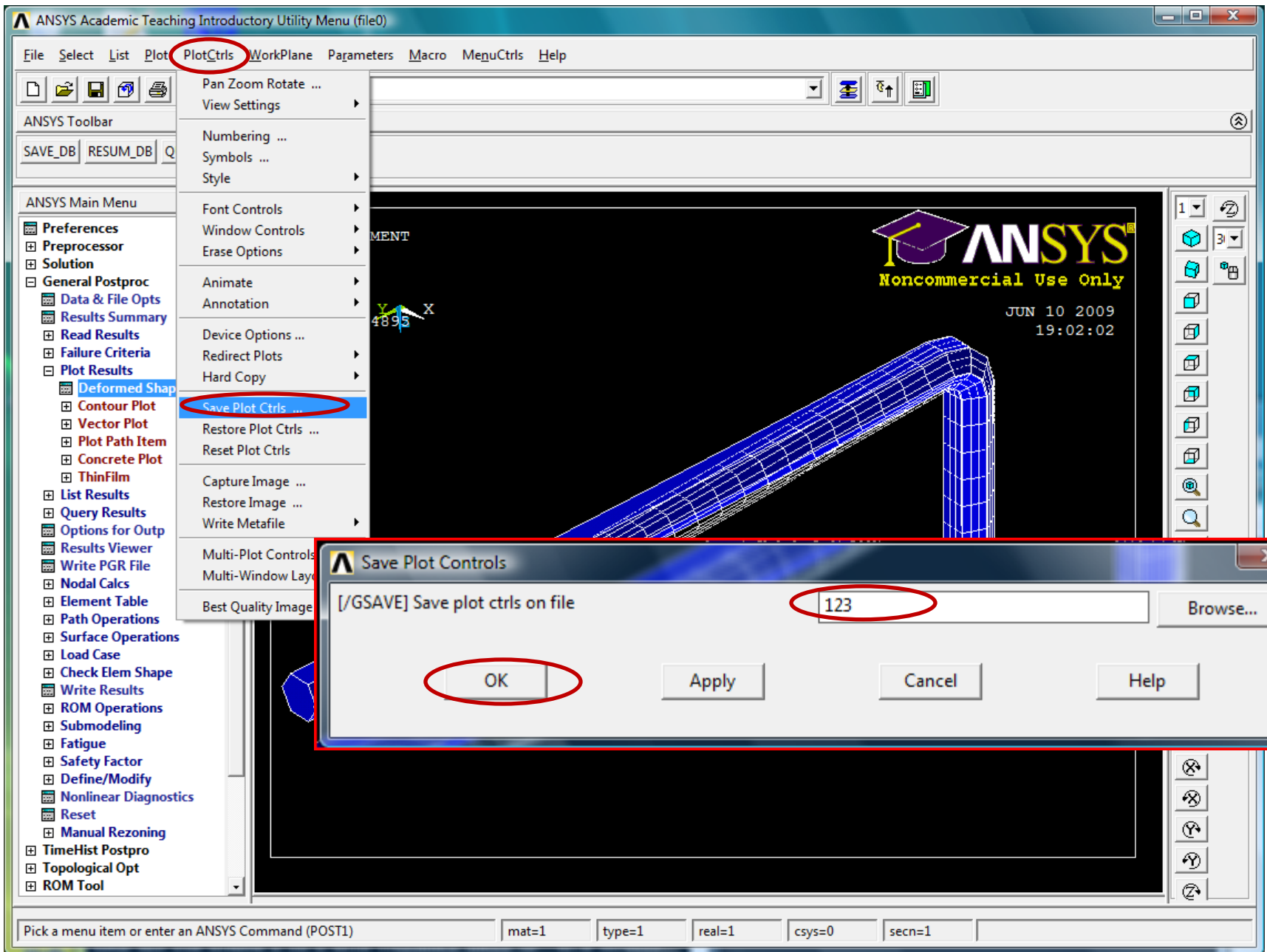
Pick a menu item or enter an ANSYS Command (POST1) mat=1 type=1 real=1 csys=0 secn=1

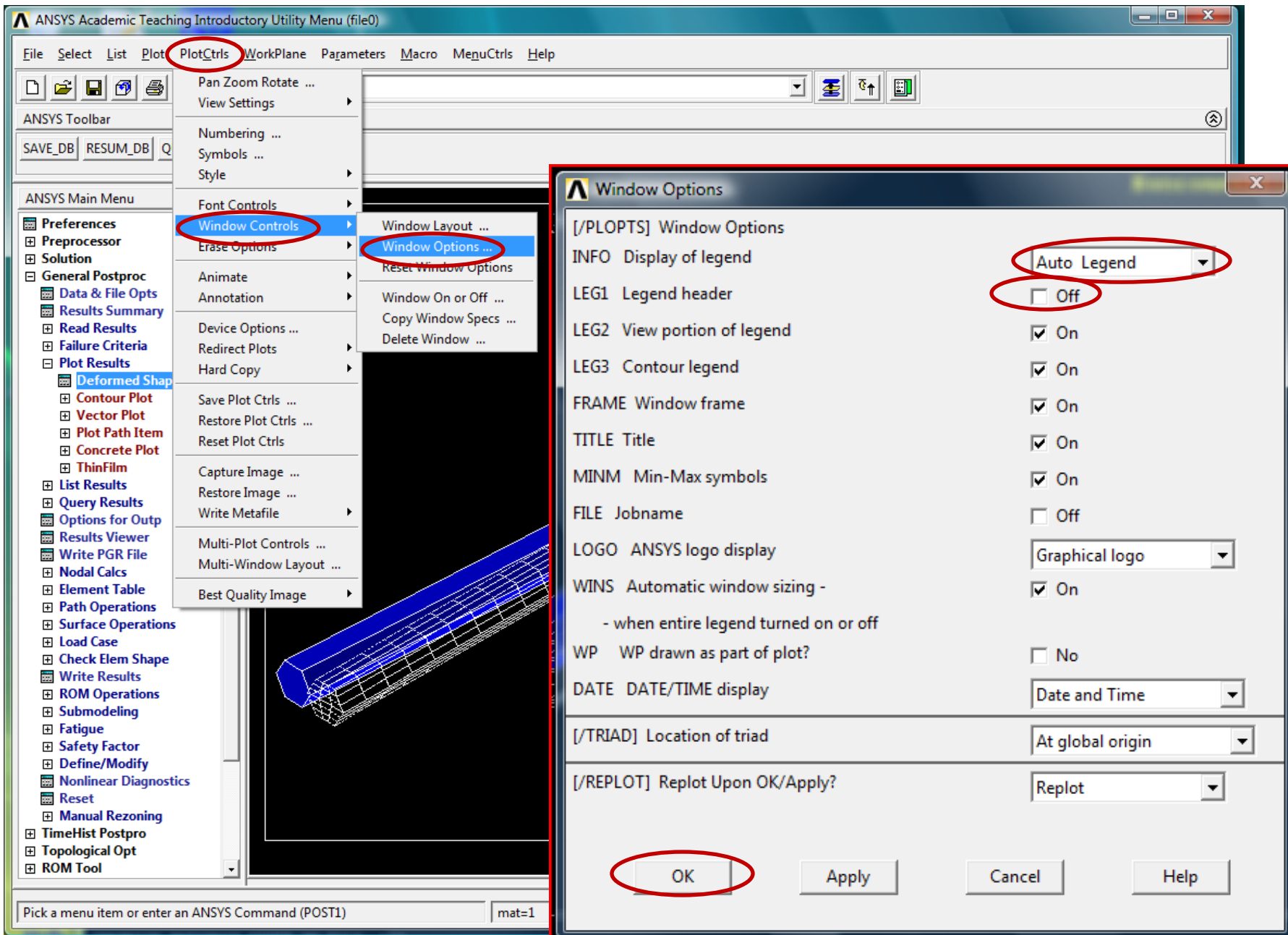


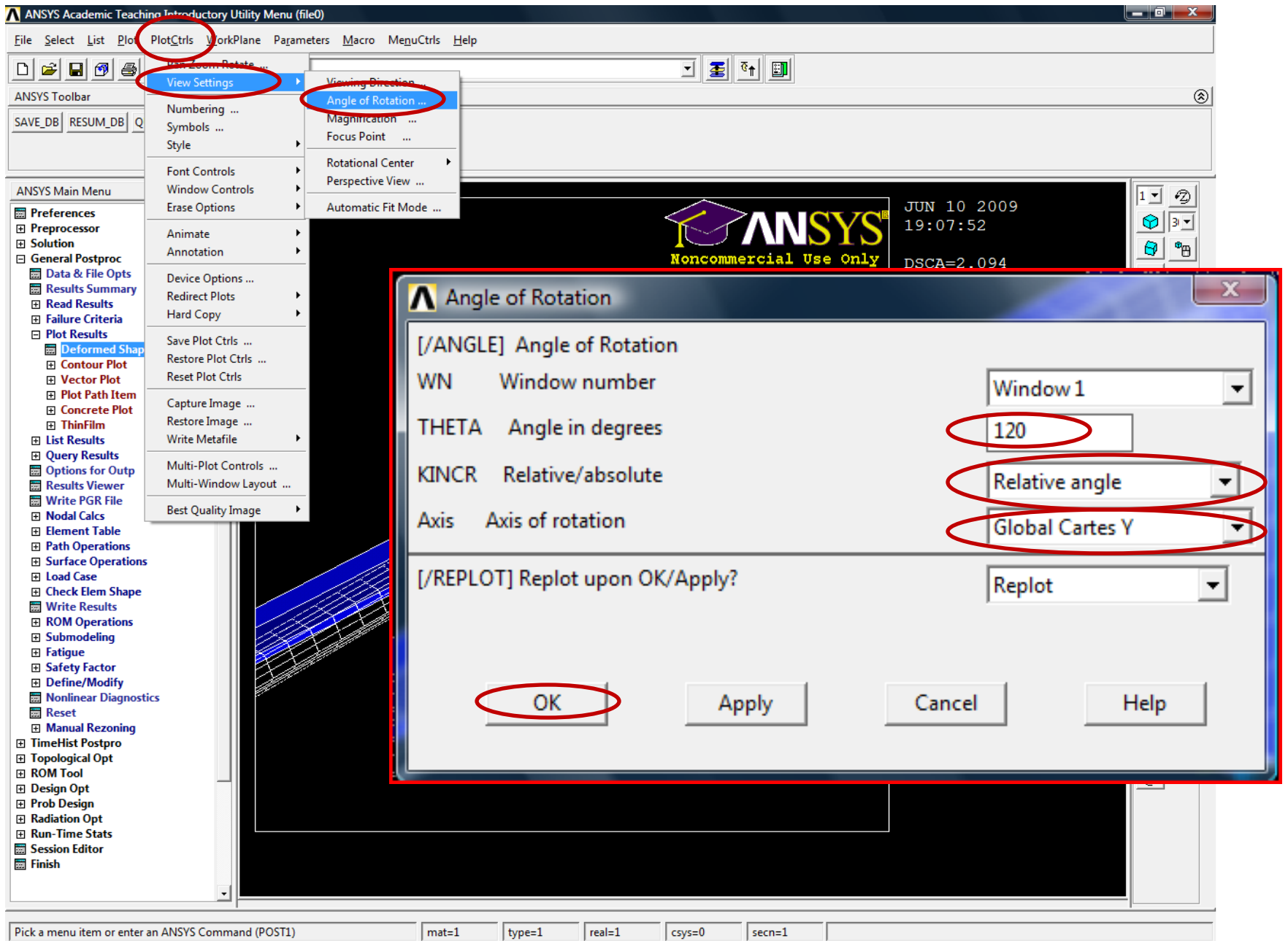


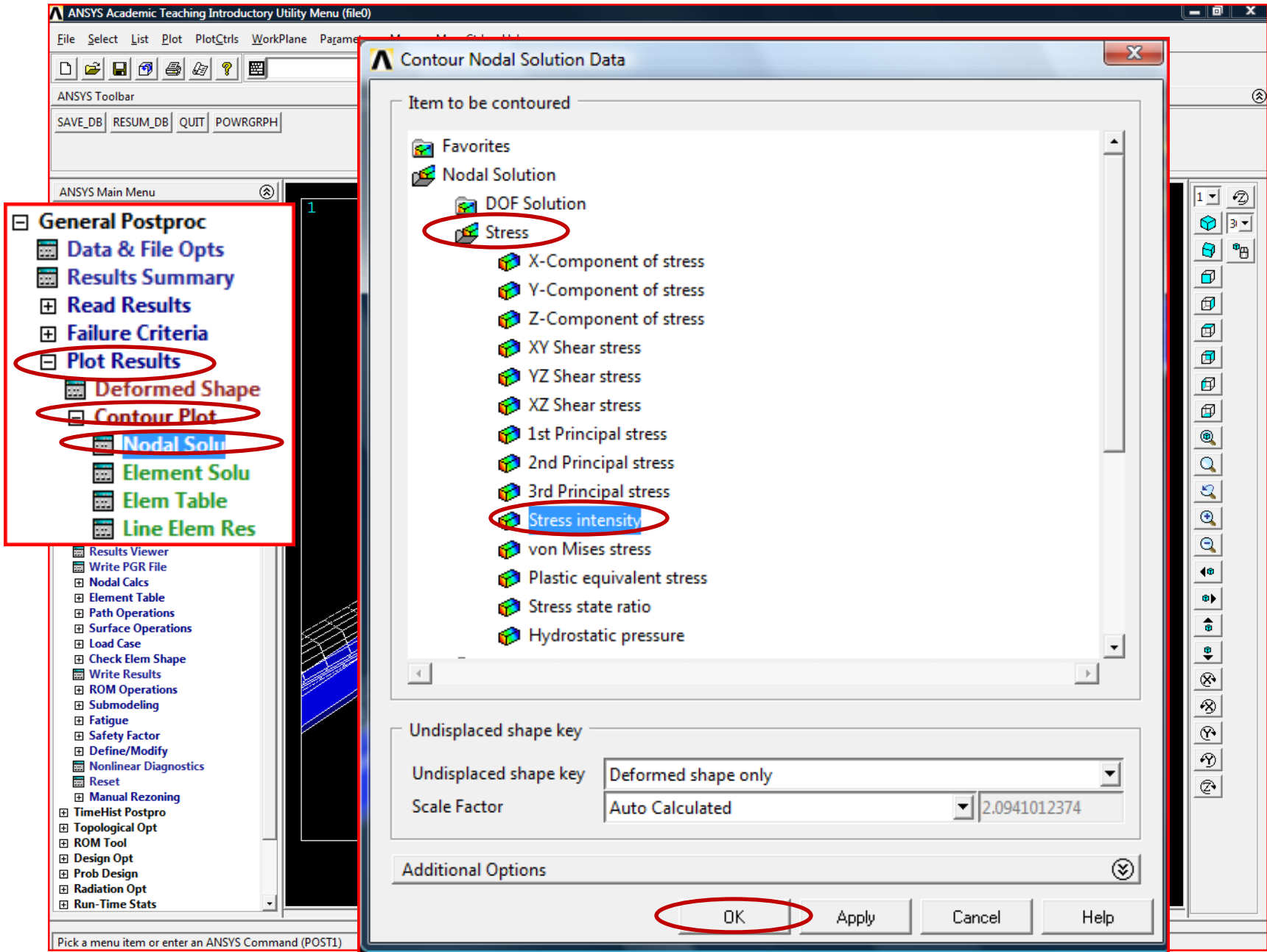


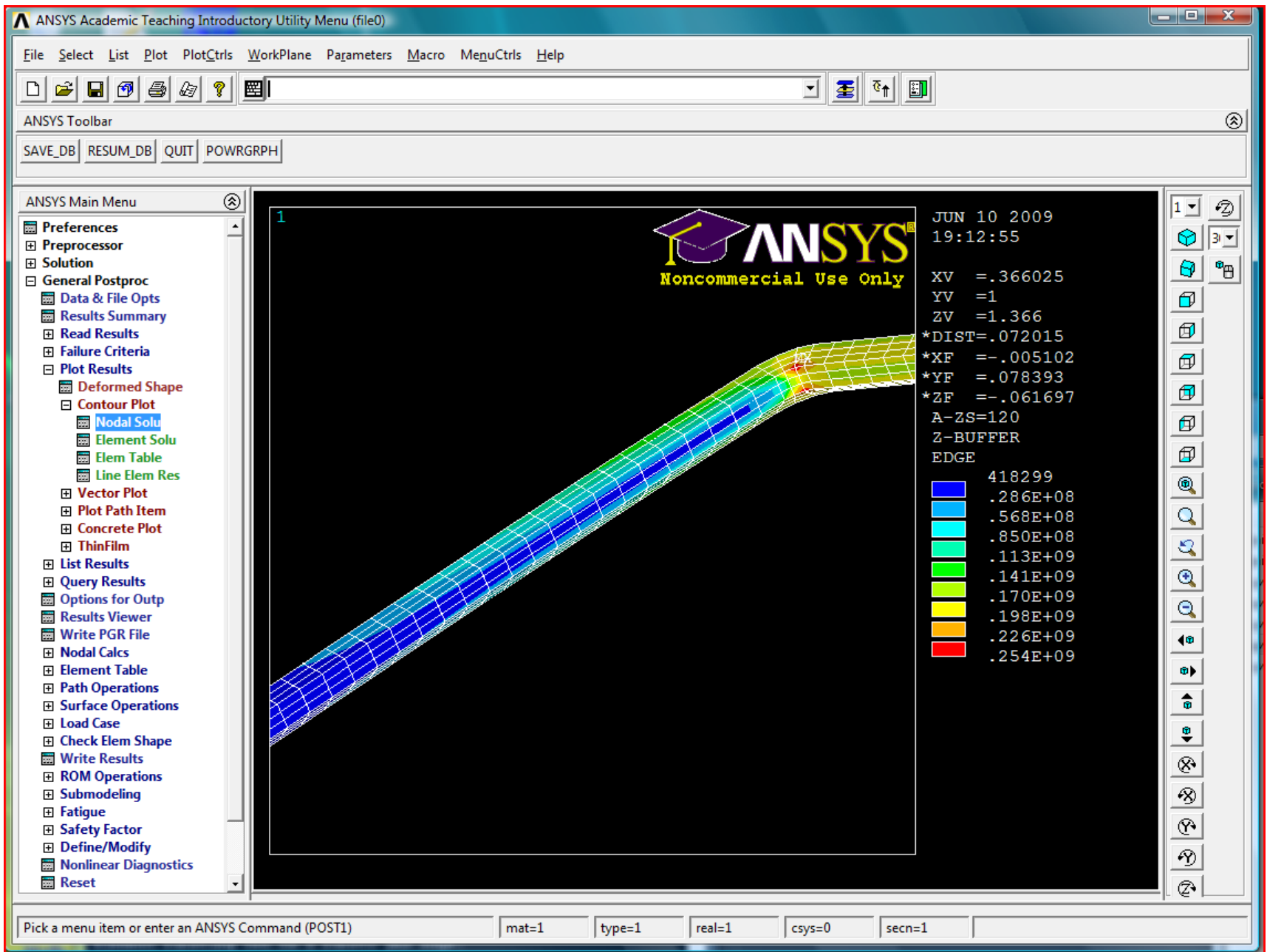












ANSYS Academic Teaching Introductory Utility Menu (file0)

File Select List Plot PlotCtrls WorkPlane Parameters Macro MenuCtrls Help

ANSYS Toolbar

SAVE_DB RESUM_DB QUIT POWRGRPH

ANSYS Main Menu

- Preferences
- Preprocessor
- Solution
- General Postproc**
 - Data & File Opts
 - Results Summary
 - Read Results**
 - First Set
 - Next Set**
 - Previous Set
 - Last Set
 - By Pick
 - Options for Output
 - Results Viewer
 - Write PGR File
 - Nodal Calcs
 - Element Table
 - Path Operations
 - Surface Operations
 - Load Case
 - Check Elem Shape
 - Write Results
 - ROM Operations
 - Submodeling
 - Fatigue
 - Safety Factor
 - Define/Modify
 - Nonlinear Diagnostics
 - Reset
 - Manual Rezoning

JUN 10 2009
19:12:55

XV = .366025
YV = 1
ZV = 1.366
*DIST = .072015
*XF = -.005102
*YF = .078393
*ZF = -.061697
A-ZS=120
Z-BUFFER
EDGE

418299
.286E+08
.568E+08
.850E+08
.113E+09
.141E+09
.170E+09
.198E+09
.226E+09
.254E+09

Pick a menu item or enter an ANSYS Command (POST1) | mat=1 | type=1 | real=1 | csys=0 | secn=1

